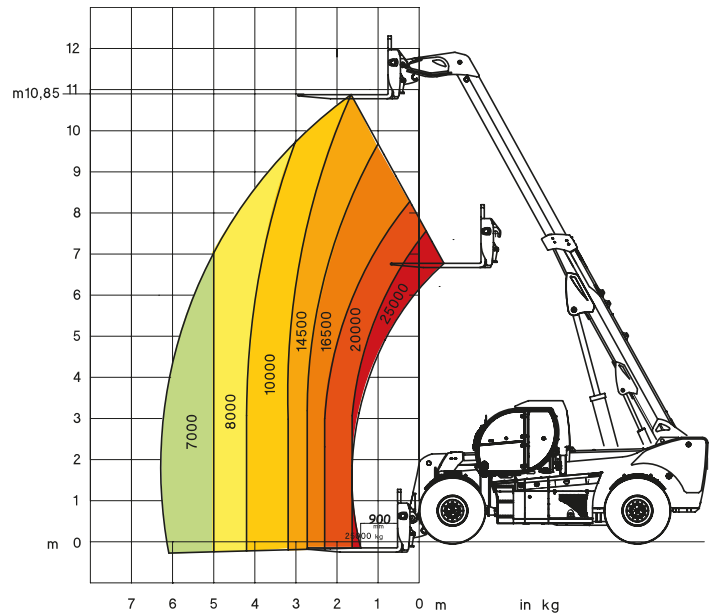


MAGNI

TELESCOPIC HANDLERS

HTH25.11



HTH30.12

LIFT CAPACITY	25.000 Kg at 900 mm load center
MAXIMUM LIFTING EIGHT	10,85 m
MAXIMUM REACH	6,30 m
CONTROLS	Multi-function electro proportional joystick
BRAKE SYSTEM	Hydraulic servo-assisted multidisc brake in oil bath on both axles, with double circuit Negative parking brake
ENGINE	Mercedes OM 924.C72 LA Euro 4 Interim Turbo intercooler 4 cylinders / 4.800 cm3 Power 201 HP – 150 KW Max rpm = 2.200 Max torque 800 Nm at 1.400 rpm Electronic injection (single pump each injector) Liquid cooling system
AXLES	Heavy Duty with 2-stage epicyclic reduction 1 steering cylinder each axle Levelling correction front axle at + 5° on the right and + 5° on the left 3 types of steering: - with front steering - with round steer - with crab steering Tilting rear axle
PERFORMANCE	Max. travel speed: 25 km/h Drawbar pull: 180 kN Gradeability: 30% Turning radius (end wheels): 7.225 mm
WEIGHTS	Total unladen: 32.500 kg Front axle unladen (boom retracted and lowered): 12.900 kg Rear axle unladen (boom retracted and lowered): 19.600 kg
TRANSMISSION	Rexroth hydrostatics Variable displacement hydrostatic pump 110 cc with electronic control Variable displacement hydrostatic motor Hydraulic gearbox with 2 speeds forward / reverse Disconnection of rear axle
SAFETY	Electronic safety system which controls the load with definition of the lifted load, radius and comparison with the diagrams stored. Block of aggravating movements of the load. Safety valves on cylinders

trasalatore later. + spostamento later. idraulico forche

